



25 years of industry experience
Locations: China(manufacturing), U.S. (warehouse)
Supported incoterms: EXW, FCA, CPT, CIP,DAP,FOB,CIF,DDP,.

US Headquarter
HRB Industries Corp.3485 Swenson Ave.St.Charles,IL60174
Phone:(630)513-0700
Cell:(630)299-6679
Eml:mike.li@hrbindustries.com

CN Manufacturing
#101,JiaoshanVilage,Yiqiao,Xiaoshan,Hangzhou,Zhejiang,CN.
Tel:(+86)15663457251
Eml:zhi.li@hrbindustries.com

HRB Industries

Hangzhou Tongrui Machinery Manufacturing Co., Ltd

www.hrbindustries.com



INDEX

1. Company Profile
2. Corporate Culture
3. Global Operations Network
4. Services & Core Capabilities
5. Customization
6. Hinge Series
7. Other Accessories
8. Customer Segmentation

COMPANY PROFILE

HRB Industrial Group

Expert in Precision Metal Manufacturing Solutions

Established in 1998, we operate under the manufacturing philosophy of "Low Cost · High Precision · Rapid Response." Integrating four core processes – sheet metal forming, CNC machining, metal casting, and integrated assembly – we provide end-to-end metal manufacturing solutions for TOP 100 enterprises across 16 global industries.

We continuously redefine precision manufacturing boundaries, transforming metal processing into both a science and an art.

Core Competencies

Process Innovation	Combines Industry 4.0 with artisan expertise, supported by 3,000+ process databases ensuring 99.996% yield rate
Agile Supply	North American smart warehouses enable 72-hour delivery, VMI systems reduce client inventory costs by 40%+
Technical Leadership	Stanford Engineering experts drive \$12M+ annual cost savings for clients
Quality Assurance	IATF 16949 certification with Six Sigma management maintaining an award winning 8-year 0 PPM record

Proven Value



38M+

Delivered 38M zero-defect components for global appliance leaders



25

Hold 25 exclusive metal processing patents



500M+

500M+ precision components manufactured



72%

72% client partnerships exceeding 10 years

CORPORATE CULTURE

Vision

To pioneer the convergence of precision and sustainability in global manufacturing

Mission

Empowering industries through intelligent metal ecosystems – where cutting-edge technology dismantles traditional cost-quality tradeoffs

Precision Engineering, Connecting the Future



Innovation as Our Foundation

Supported by our patent technology matrix, we allocate 10% of annual revenue to R&D, overcoming technical barriers in high-precision, long-life hinge technologies.

Value Co-creation

Building a 360° quality assurance system from material selection to delivery, we help clients reduce product development cycles by 30% through modular customization services.



Responsible Stewardship

Adhering to green manufacturing standards, we commit to achieving 100% recycling of production waste by 2035, empowering sustainable development in home appliance and agricultural machinery industries.

GLOBAL OPERATIONS NETWORK

Cross-Regional Capacity Solutions

U.S. Global Operations Hub

Chicago: Bridging Continents

Strategic Role: Synchronizing Hangzhou's R&D excellence and Cambodia's cost-efficient manufacturing for worldwide agility

Core Capabilities:

-Technical Coordination: Multilingual engineers supporting cross-timezone operations

-Dynamic Inventory AI: Self-learning stock models for regional demand forecasting

One-Stop Globalization: From prototyping in Asia to doorstep delivery worldwide

Hangzhou Factory

Precision Hardware Excellence

In-house R&D: European patented hinge technology with CAE simulation & mold integration

Precision Control: $\pm 0.05\text{mm}$ tolerance, 100,000-cycle lifespan certification

Global Compliance: IATF 16949 certification

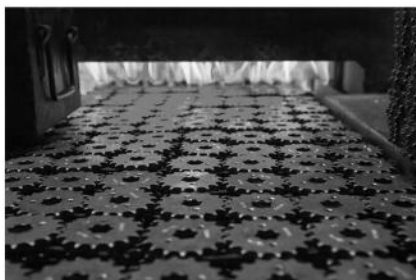
Cambodia Factory (Under Construction)

Smart Manufacturing Hub in ASEAN

Agile Production: Intelligent flexible lines for EU/US/Asia standards switching

Seamless Synergy: Real-time process integration with Hangzhou R&D for 100% quality consistency

Zero-Tariff Access: 30% cost efficiency as a core node in the ASEAN Free Trade Area



SERVICES & CORE CAPABILITIES



Engineering & Design

HRB's engineering team brings together world-class talent from top global institutions and deep industry expertise. We utilize leading CAD platforms including SolidWorks, CATIA, and AutoCAD for precision modeling, alongside advanced simulation software to validate mechanical performance and manufacturability. Our integrated design workflow enables rapid iteration, optimal cost-performance, and tailored solutions for complex applications across industries.

Production

HRB operates its own manufacturing facilities, equipped to support full-cycle production from prototyping to volume manufacturing. Our capabilities include in-house tooling design, progressive die stamping, and advanced manufacturing processes honed through decades of experience in the automotive sector. This vertical integration allows us to maintain full control over quality, lead time, and cost.

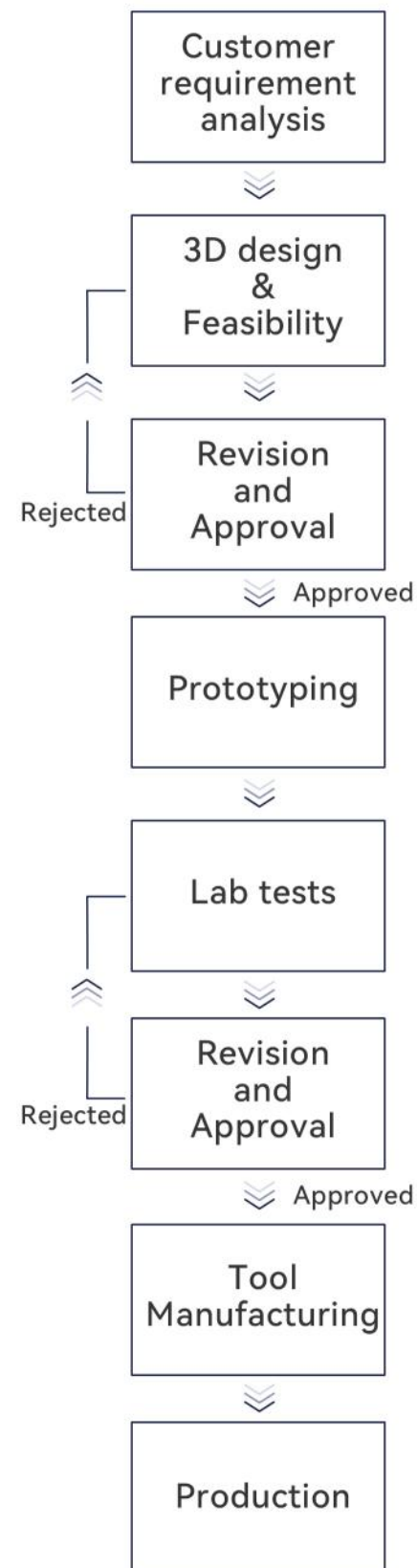
Quality Assurance

HRB's Quality Center is staffed with certified engineers and equipped with high-precision CMMs and analytical instruments capable of 0.05mm-level measurements. We implement rigorous process controls, including FMEA, SPC, and CPK monitoring, ensuring a 99.8% yield rate. Our commitment to quality is validated through sustained IATF 16949 and ISO 14001 certifications, reflecting our adherence to global standards for both product and environmental excellence.

External Services

The HRB Global Service Team, led by a CEO with over 15 years of hands-on industry expertise, offers comprehensive lifecycle support. With dedicated FAE (Field Application Engineering) units and seamless coordination across the U.S., China, and Cambodia, we provide services from early-stage design consultation to post-sales technical support. Our agile logistics and customer support systems achieve a 98% on-time delivery rate, ensuring consistent value delivery to clients around the world.

CUSTOMIZATION



Flexible Design Precise Matching

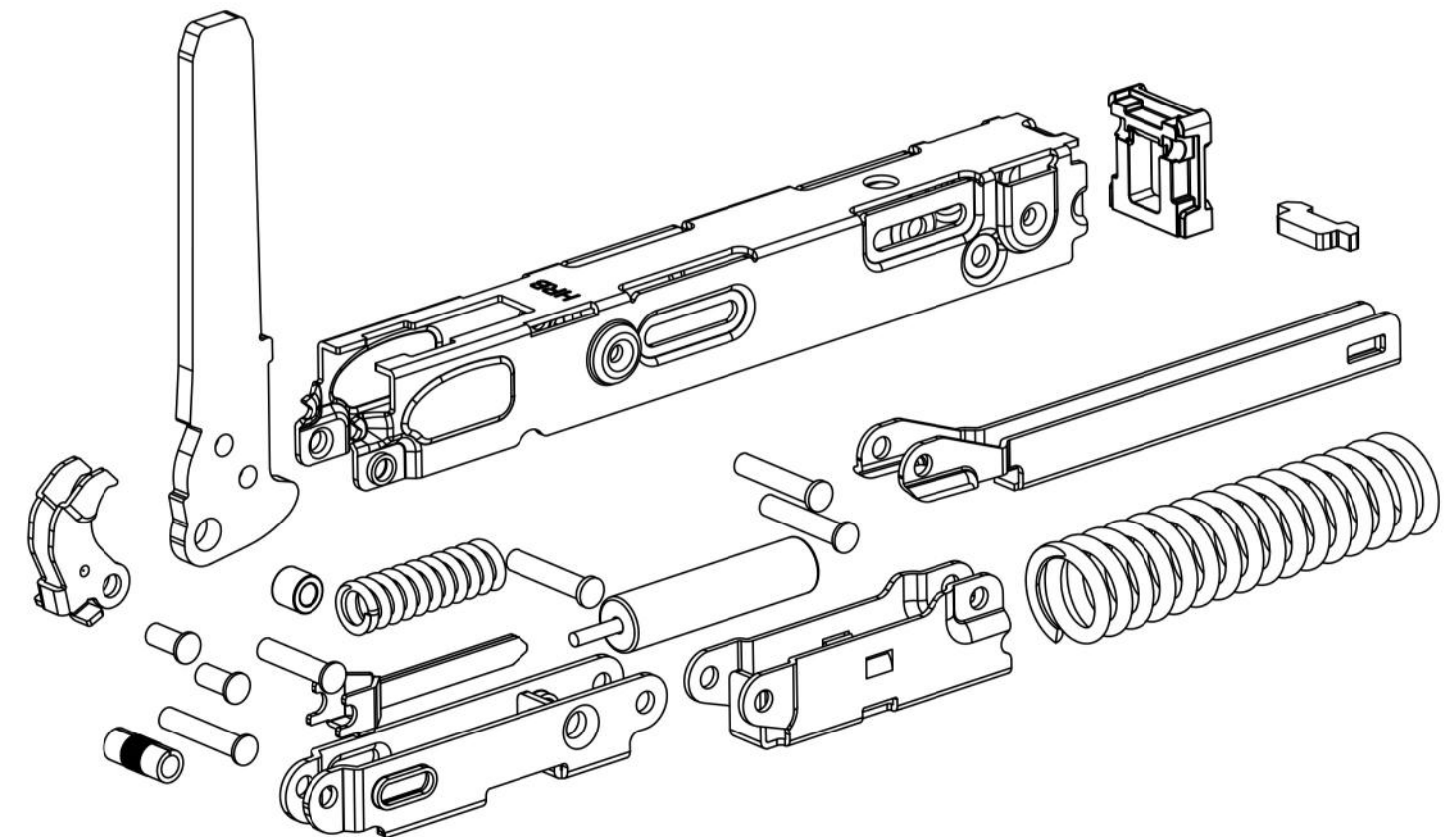
Pioneering a "72-hour prototype delivery" system, our flexible production lines and intelligent quality control reduce the client journey from design approval to first-sample delivery to 1/3 of the industry average. This accelerates R&D efficiency and secures market leadership.

Cost Optimization Value Enhancement

Through material science innovations and process advancements, we reduce client costs by 15%-30% while maintaining military-grade quality (zero wear in 100,000-cycle fatigue testing). Lifetime technical support and iterative upgrades ensure every hinge becomes a performance-enhancing cornerstone.

Deep Collaboration Full-Scenario Coverage

Whether designing concealed hinges for smart homes, corrosion-resistant joints for agricultural machinery, or sterile transmission modules for medical devices, our "deep collaborative R&D model" translates patented technologies into competitive advantages for client products—redefining the precision and reliability of "Made in China."



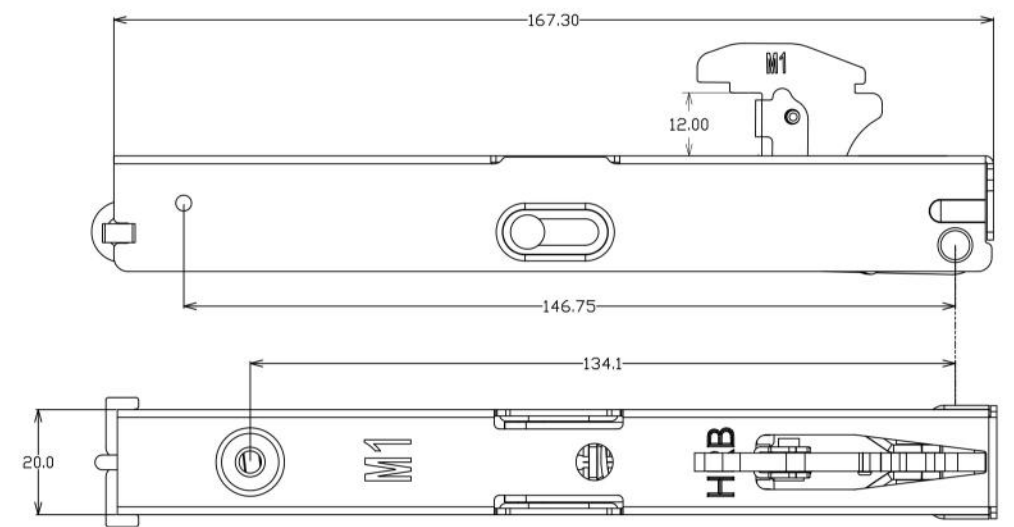
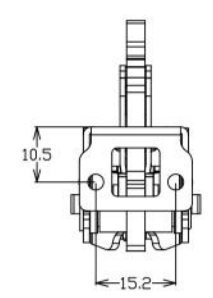
HINGE SERIES

GENERIC OVEN HINGE



M1

EUIPO
EUROPEAN UNION
INTELLECTUAL PROPERTY OFFICE
No 015093065-0001



TENSION HINGE

Specifications

Closure life	Door opening force
50k	35-45N
Closing force	Salt spray test
10-20N	96H
Door weight	Applicable size
4-12KG	400*500 500*600

Usage scenarios



HINGE SERIES

GENERIC OVEN HINGE

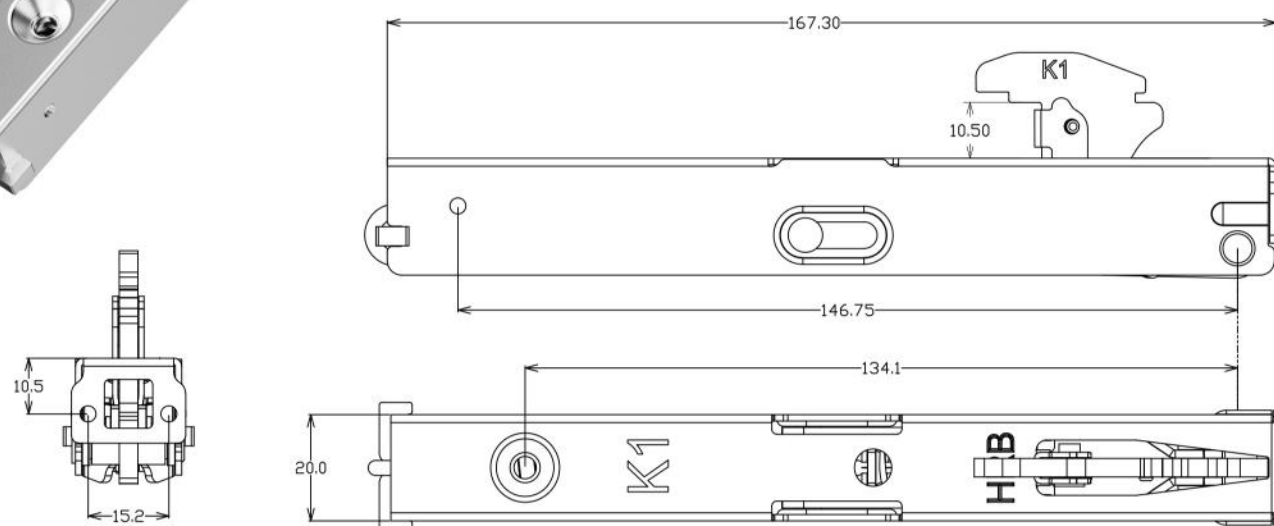
K1



No 015093065-0001

Specifications

Closure life	Door opening force
50k	35-45N
Closing force	Salt spray test
10-20N	96H
Door weight	Applicable size
4-12KG	400*500 500*600



Usage scenarios



TENSION HINGE

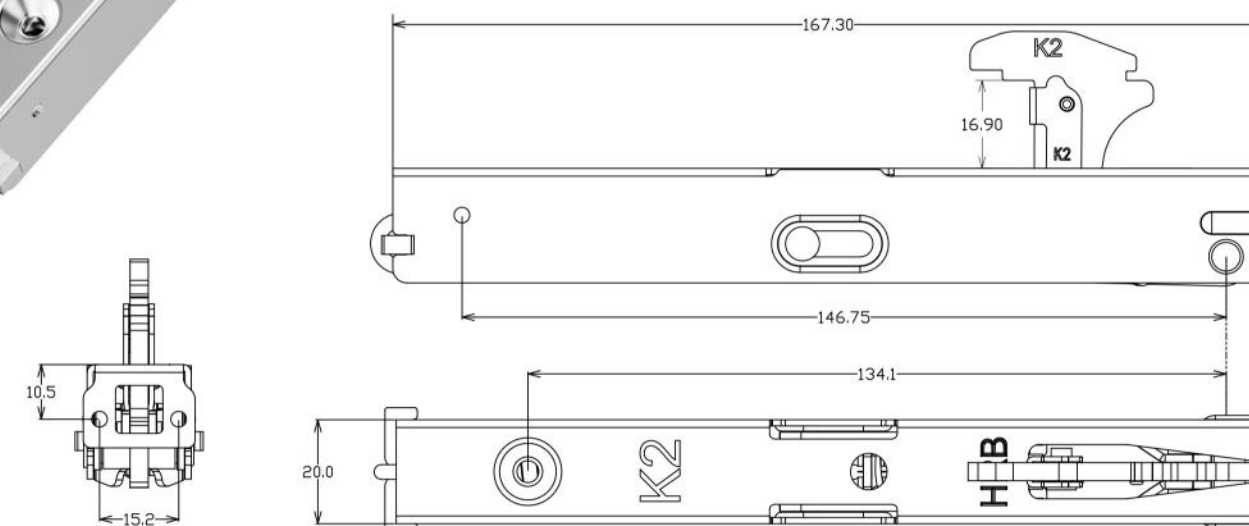
K2



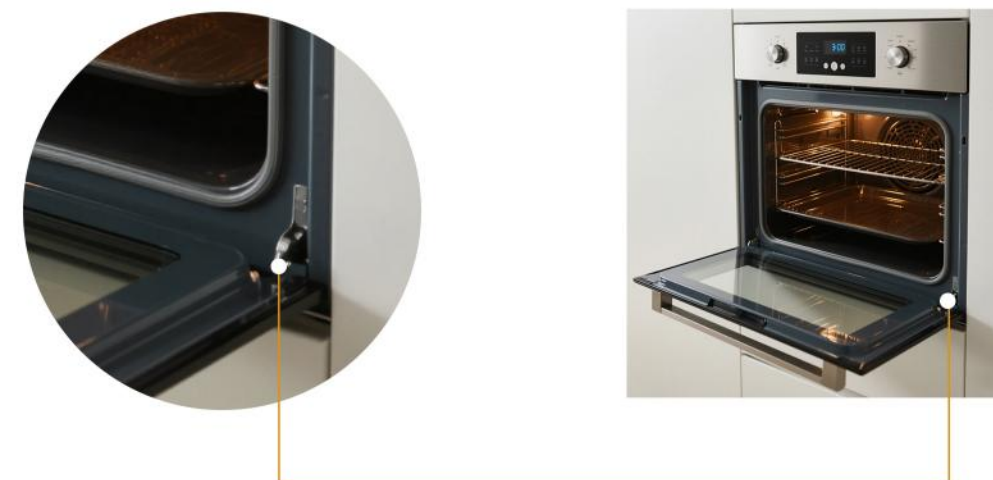
No 015093065-0001

Specifications

Closure life	Door opening force
50k	35-45N
Closing force	Salt spray test
10-20N	96H
Door weight	Applicable size
4-12KG	400*500 500*600



Usage scenarios



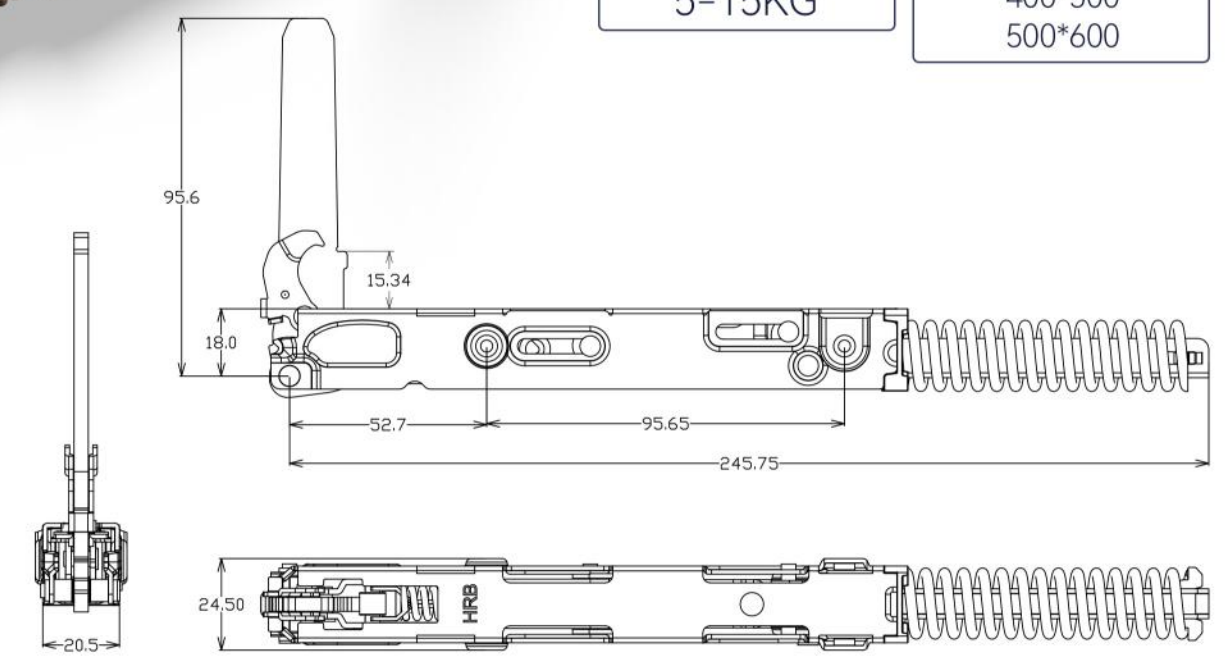
HINGE SERIES

SOFT-CLOSE OVEN HINGE



SC1

EUIPO
EUROPEAN UNION
INTELLECTUAL PROPERTY OFFICE
Patent Pending



COMPRESSION HINGE

Specifications

Closure life	Door opening force
50k	35-45N
Closing force	Salt spray test
10-20N	96H
Door weight	Applicable size
5-15KG	400*500 500*600

Usage scenarios



OTHER ACCESSORIES

Hinges | Fans | Blades | Structural Components



CUSTOMER SEGMENTATION

Home Appliance

Ag Machinery

Automotive

Industrial

